

# FOCUS DIGITAL X-RAY



# EICKEMEYER® HIRAY PLUS X-RAY MACHINE

***The EICKEMEYER® HiRay PLUS doesn't have to do anything or prove more:***

With over 1,500 installations, it is one of the best-selling portable X-Ray machines in the veterinary field. For some, the fact that the majority of these 1,500 devices provide reliable daily service in small animal practices is still surprising. However, this is precisely where the robustly designed device, in conjunction with modern X-Ray panels like the DigiVet DR, yield excellent results. They not only offer a future-proof solution but also serve as an extremely affordable and attractive alternative to large, stationary X-Ray machines. The special feature of the HiRay PLUS is a powerful HF inverter with 2 kW and a maximum tube voltage of 100 kV.

The system also impresses with its extremely low weight, its compact dimensions as well as the integrated light visor with crosshairs and two centering laser diodes for distance measurement.

**Item No.: 701115**



## Highlights

- **Over 1,500 installations in the veterinary sector**
- **Proven reliability**
- **Powerful 2 kW HF inverter**

# EICKEMEYER® HIRAY 5 X-RAY MACHINE

## *May it be something more?*

If you need more power for your patients and have very large dogs to image, then the “big brother” of the HiRay PLUS is the right choice for you: The HiRay 5 has one tube voltage emitting a strong 120 kV and the maximum output power is a whopping 5 kW. The associated larger mA range enables shorter exposure times. This is ideal for imaging areas with faster movement, such as the small animal thorax and chest X-Rays of a big dog.

The integrated collimator with crosshairs and two laser pointers allows for easy and quick capture of every radiographic position. This ensures a correct focus position is accurate and very easily determined. Utilizing automatic mAs control technology based on the actual kV value selected on the control panel ensures that stable results are achieved, even in cases where the mains voltage is reduced due to high impedance.

**Item No.: 701105**



## Highlights

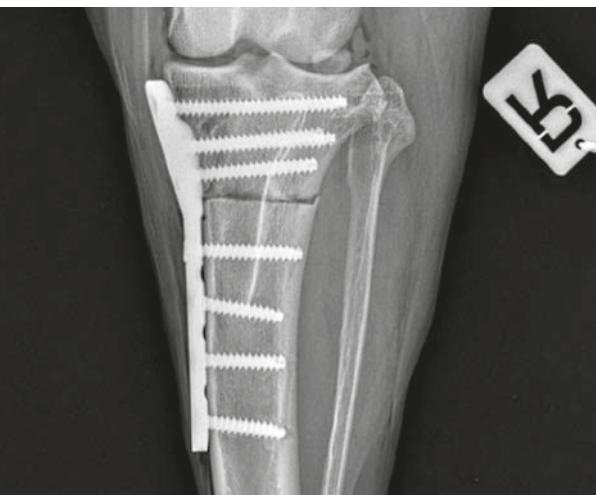
- **Very powerful 5 kW HF inverter**
- **Organ automatic with 168 memory locations**
- **Robust and reliable**

# EICKEMEYER® HIRAY FLOATING TABLE

## *X-Rays safely and comfortably*

The EICKEMEYER® HiRay X-Ray table provides a smooth and even surface for positioning your patients on. Not only is this Floating Table ideal for mobile X-Ray generators it also has a generous travel path which simplifies patient positioning considerably. Complete with a secure and safe self-centering cassette tray which can easily incorporate a DR X-Ray panel. The mechanically braked X-Ray table streamlines the positioning of your patients significantly and improves workflow.

Item No.: 701480



## Highlights

- Floating table top
- Self-centering cassette drawer
- Most comfortable solution for small animal practices

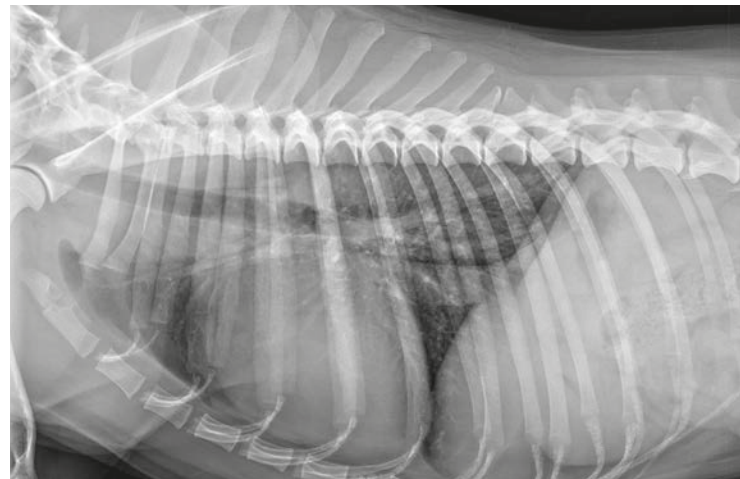
# DIGIVET DR X-RAY PANEL

## *Razor-sharp X-Ray images*

The DigiVet DR X-Ray panel can be effortlessly utilized as a digital upgrade solution for an existing X-Ray system. It can also be integrated with other components or combined with a HiRay X-Ray machine and an X-Ray stand, resulting in an innovative X-Ray solution with an unbeatable price-to-performance ratio.

The 43 x 43 cm panel delivers an amazing resolution of 9.4 megapixels and ultra-fast acquisition times of just 1.2 seconds. The included VXvue™ imaging software is user-friendly, versatile and with the DICOM 3.0 as standard is compliant with most practice management systems. The automatic one exposure detection (AED) enables exceptional images with reproducible results.

**Item No.: 708482**



## Highlights

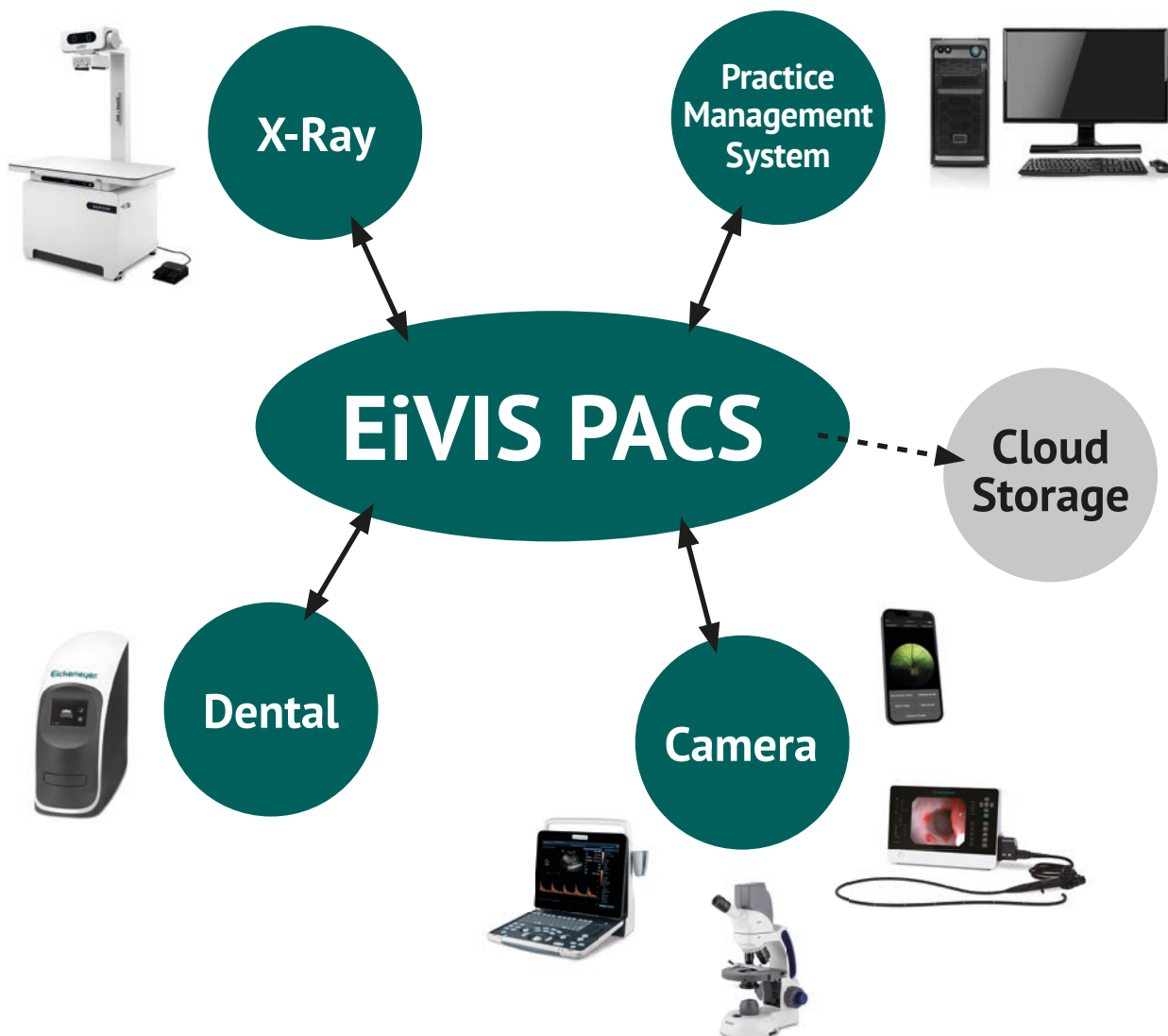
- **Digital upgrade solution**
- **Ultra-fast acquisition times**
- **Auto Exposure Detection mode**



# EIVIS – EICKEMEYER® VETERINARY IMAGING SYSTEM

## *One software for all image data!*

EiVIS is a cross-manufacturer veterinary PACS for acquisition, takeover, displaying, processing, and management of all patient-related digital image data. EiVIS supports the connection of practice management systems via DICOM and GDT interfaces as well as device connections from different manufacturers all in one software. With EiVIS your customer data will simply be sent from the practice software to your digital devices. This not only means a significant reduction in time-consuming data entry, but also reduces possible data omissions and errors between different software products. With EiVIS you can edit all your digital image data in your familiar interface, with the familiar functions and practice-specific settings. The add-on X-Ray modules available in EiVIS support this functionality and reprocessing of X-Ray images via a DICOM worklist.



### ***EiVIS PACS X-Ray module***

EiVIS PACS is the link between your practice management system and your digital imaging devices. The customer data will be in the form of work orders from your practice management software sent out to your digital devices with just a few clicks, this means that the systems automatically transfer time-consuming data inputs that may have even been previously omitted. EiVIS PACS also supports you in sending your image files, which allows you to share your data easily, quickly, and securely with your partners and patient owners.

**Item No.: 709002**

### ***EiVIS Dental X-Ray module***

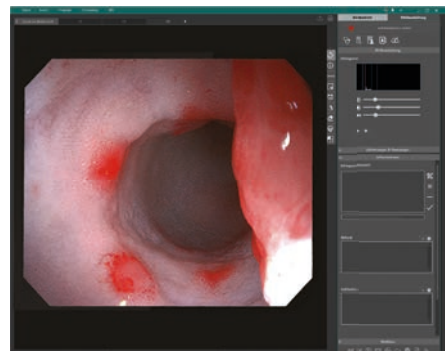
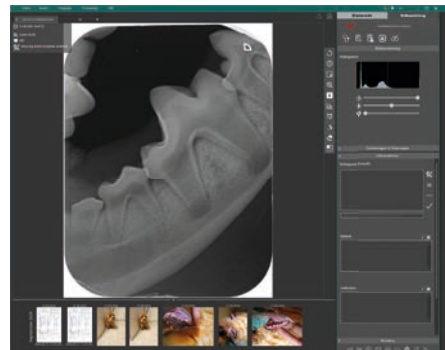
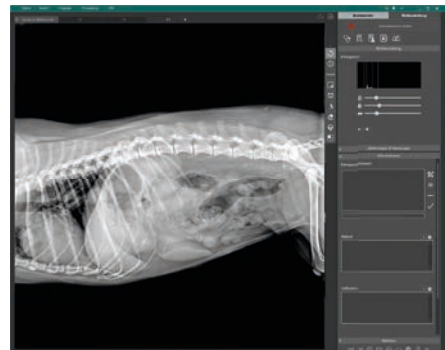
EiVIS Dental allows the connection of dental sensors or imaging plate systems from various manufacturers. With EiVIS Dental, you can acquire and accurately diagnose dental X-Rays on the same platform as EiVIS PACS.

**Item No.: 709001**

### ***EiVIS camera module***

With EiVIS Camera, you can save and edit all video and image data from systems including ultrasound, otoscopes, endoscopes, microscopes, digital cameras and even your smartphone. The connection of the end devices is via DICOM, grabber, or a folder on your desktop.

**Item No.: 709000**



## **Highlights**

- **Cross-manufacturer veterinary PACS**
- **Intuitive and simple user interface**
- **Time savings in transferring patient data**

# MINDRAY VETIX S300 DR X-RAY SYSTEM

## *Strengthen diagnosis – improve care*

The Vetix S300 is a state-of-the-art DR X-Ray system from Mindray Animal Medical. With more than 30 patents, it combines a high-quality CANON X-Ray tube with a powerful HF inverter and an X-Ray panel of the latest generation. Together with the well-designed veterinary workflow and professional imaging solutions the Vetix S300 is an excellent choice for veterinarians who value quality, reliability and innovation in veterinary radiology and futureproofing themselves.

Brilliant images – thanks to the globally unique UHF inverter frequency of 460 kHz improves the radiation quality, reduces radiation noise, improves image quality and enables ultra-short exposure times of just 1 ms. This creates high-resolution, razor-sharp digital X-Ray images whilst also reducing the radiation exposure for your team and your patients in the long term.





## ***Efficient workflow***

The integrated image capture workstation with a large LED display enables easy, minimalist, and efficient workflow.

- iFast – One-button power on/off simplifies operation and reduces errors.
- iSolo – The entire investigation process takes place on one platform and can be easily accessed and controlled by one operator.
- iShotHelper – The integrated, professional positioning aid offers detailed instructions for precise positioning of your patients.
- iVocal – Voice-controlled exposure allows you to control the system, hand-free.

## ***Advanced imaging technology***

Based on Mindray's powerful X-Ray algorithm technology, the system provides suitable image exposure parameters for different species. The intelligent onboard calculation methods automatically optimize the parameter combinations, which means improved digital X-Ray images are delivered in a professional and reproducible quality.

**Item No.: 701150**



## **Highlights**

- **Ultra-fast recording times thanks to UHF inverter**
- **Minimalist and efficient workflow**
- **Powerful HF inverter (32 kW, 125 KV / 500 mA)**

# DIGIVET DR EQUINE X-RAY SYSTEM FOR HORSES

## *The complete system for your horse practice*

The DigiVet DR Equine is a digital X-Ray system ideal for mobile equine practices. The system consists of a wireless Csl X-Ray detector including:

- PODOBLOCK® protective box
- High-end notebook with 15.6" full HD monitor
- VXvue™ image editing software as well as a rigid outdoor case for all components.
- HiRay B X-Ray machine, portable battery-operated unit, which has many benefits in terms of performance.

DigiVet DR Equine WLAN panel impresses with its easy operation, fast, wireless transmission speed and razor-sharp, high-resolution X-Ray images.

The Csl X-Ray detector weighs only 2.1 kg and has an active area of 25 x 30 cm that is ideal for transportation. Automatic exposure detection (Anytime™) and the modern DQE technology for reduced X-Ray doses are two further features, which make practical work on patients easier.

The DigiVet DR Equine panel and the HiRay B combined with their light and compact suitcases provides a robust system that fits into every vehicle.

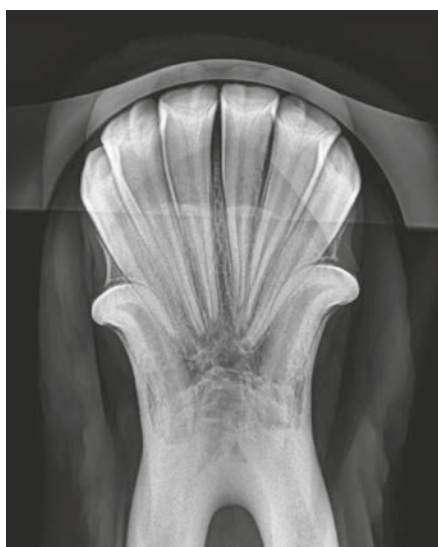
**Item No.: 708500**



## **EICKEMEYER® HiRay B X-Ray machine**

The HiRay B is a compact, battery-operated X-Ray machine that is specifically designed for use in the mobile equine practice. Weighing just 8.2 kg and with a performance of up to 90 kV at 20 mA, it is far ahead of most competitors in this weight class. This enables high-resolution imaging even at low doses. The modern touchscreen console ensures intuitive operation of the device and the supercapacitor battery enables you to take up to 999 X-Rays with just one battery charge.

**Item No.: 701110**



### **Highlights**

- **Complete wireless solution for horses**
- **High resolution CsI X-Ray detector**
- **Powerful, lightweight X-Ray machine**

# EICKEMEYER® PAWSITIONER POSITION AID SET

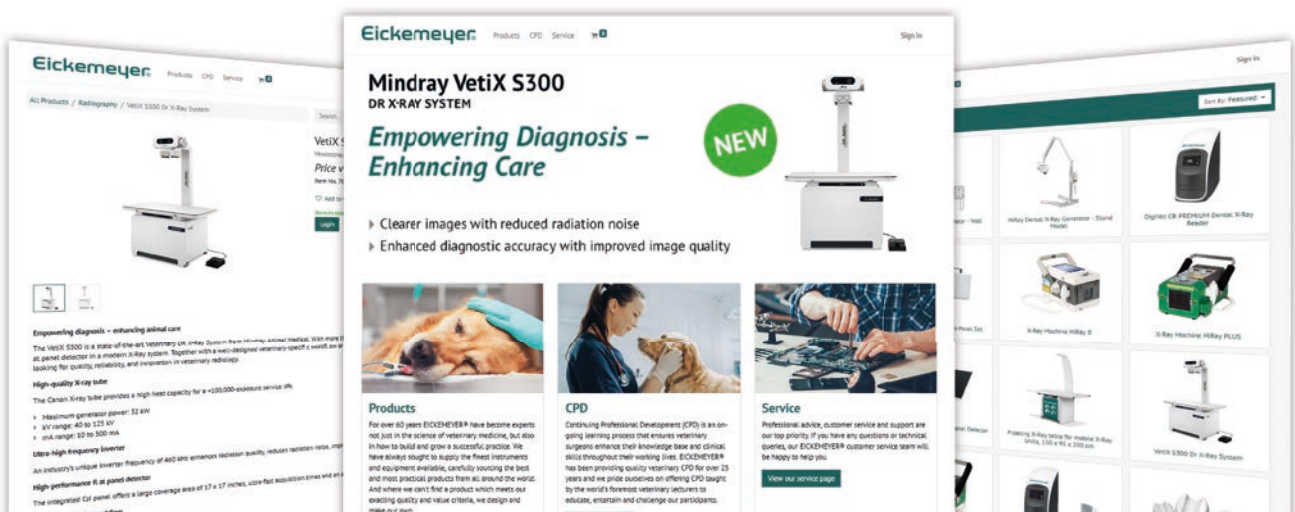
## Perfect for your veterinary practice!

The EICKEMEYER® Pawsitioner is a patented positioning aid for optimal fixation of your patients in surgical procedures and in diagnostics imaging.

The Pawsitioner makes surgical preparation easier to transport patients to the operating room, where no repositioning is required. This saves time and keeps the prepared areas sterile. After the operation the patient can safely exit the theatre in the Pawsitioner. The Pawsitioner also offers an ideal way to quickly prepare patients for intraoperative or post-operative X-Rays.

Thanks to the quick and secure fixation taking X-Rays not only made easier, but also the Radiation exposure of your staff becomes significant reduced because keeping patients on the X-Ray table is no longer necessary. The Pawsitioner design is ideally suited for a wide range of veterinary activities including: X-Ray, Laparoscopy, CT, MRI, Myelography and Ultrasonography.

Item No.: 605920



Please visit our new Onlineshop  
[www.eickemeyer.co.uk](http://www.eickemeyer.co.uk)